

Diabetes: Causes and costs



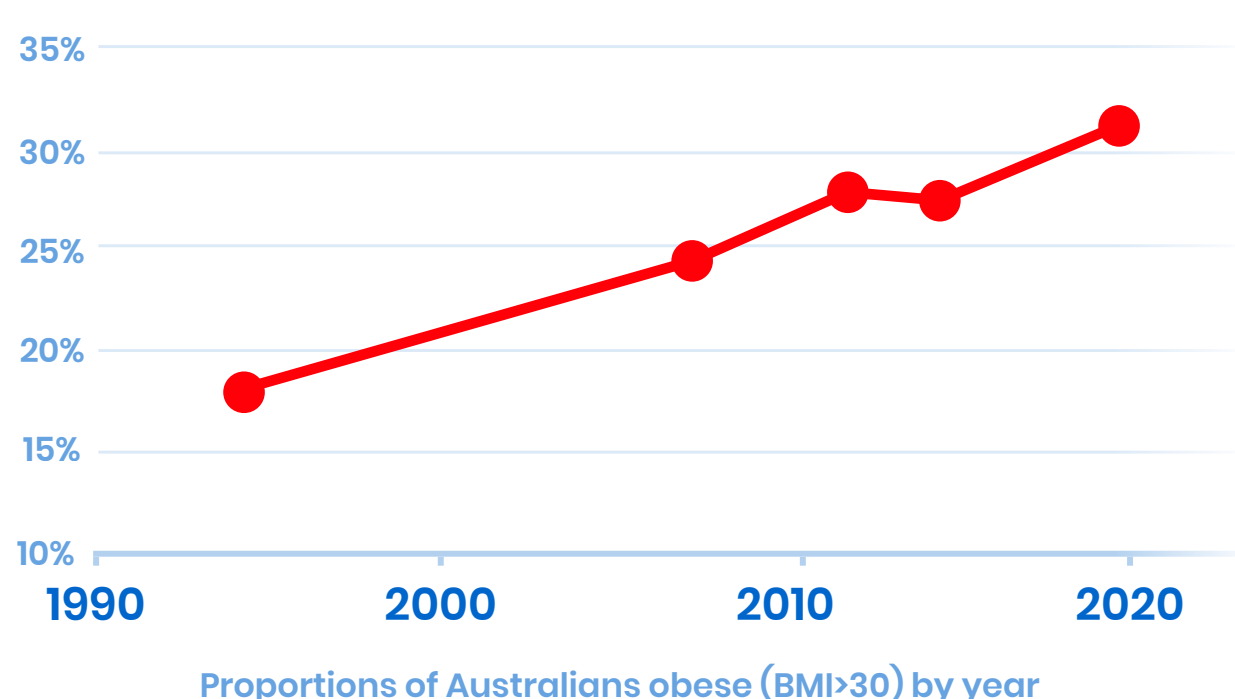
Why is it happening, and who is affected?



The diabetes epidemic is **being driven by weight gain** in the population



Obesity rates have **nearly doubled** from 18% in 1995 to 31% today



Aboriginal and Torres Strait Islander people are almost four times more likely than non-Indigenous Australians to have diabetes or pre-diabetes

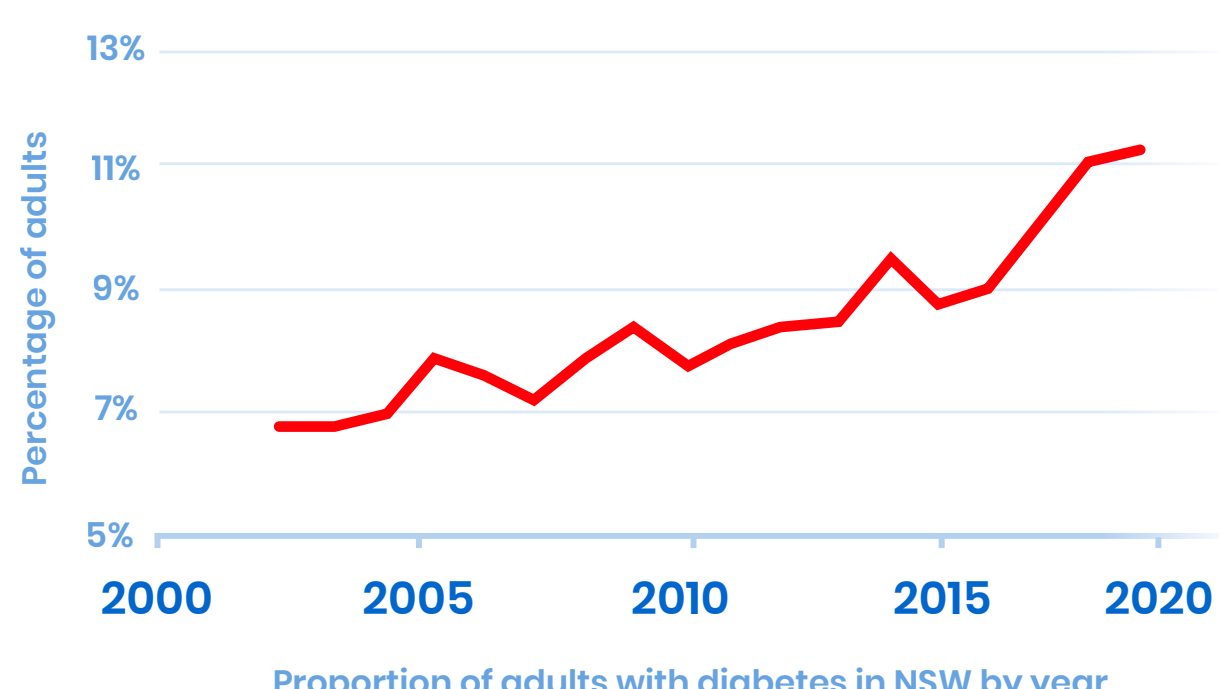


How big is the problem?

Diabetes is Australia's **largest disease burden**, even though 80% of it is preventable



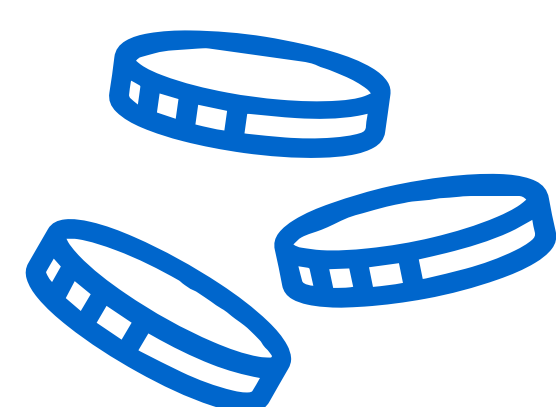
1 out of every 9 health dollars is spent on diabetes



Diabetes is at a record 12.3% prevalence, increasing each year since the early 2000s

Data from New South Wales, MoH Diabetes Case for Change report

What is the cost to our public health system?



\$16,698/yr per person with type 1 diabetes with micro- and macrovascular complications

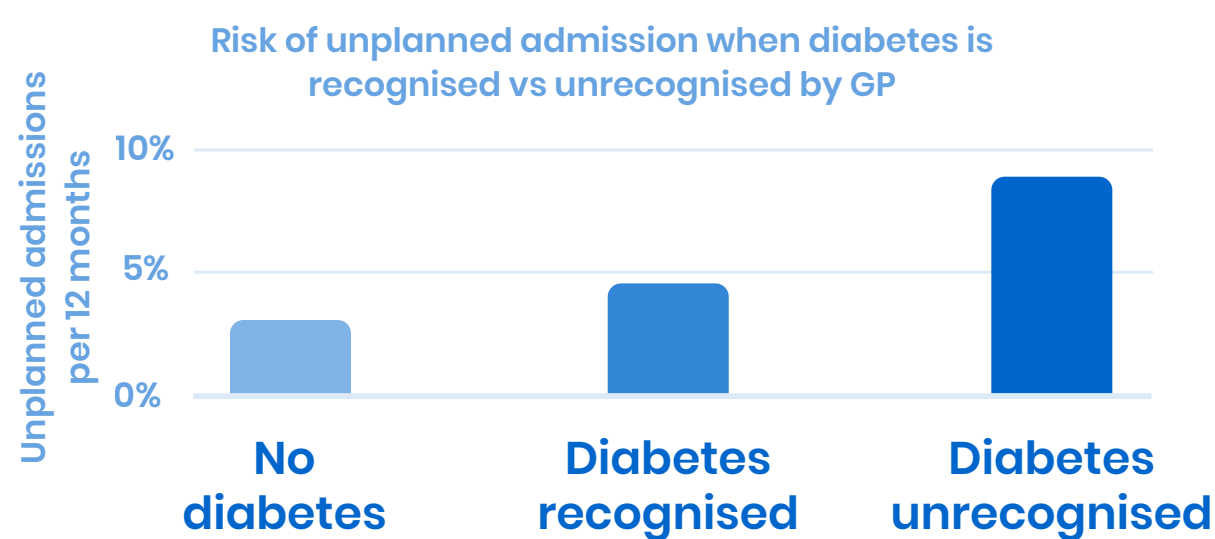
\$6 billion Type 2

\$570 million Type 1

per year across Australia



People whose diabetes is not recognised by their GP have **double the risk of unplanned hospitalisation** compared to those who are correctly diagnosed and treated

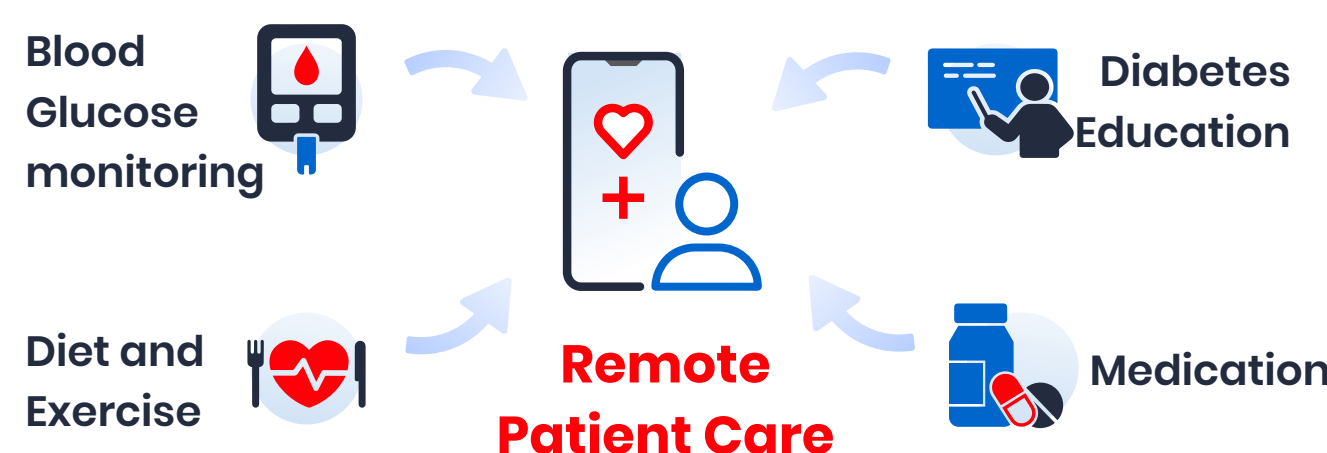


What is the future of treatment?

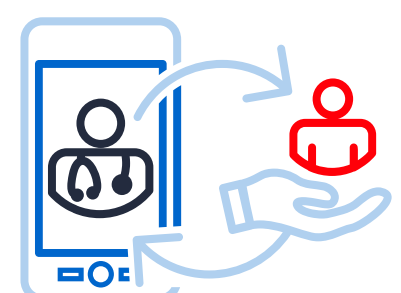
Diabetes care is largely dependent on patient **self-management and empowerment**

Patients with diabetes must make numerous daily decisions as to what to eat, when to exercise, and determine their insulin dose and timing if required

AI has changed the way diabetes is **prevented, detected, and managed**, which can help in bringing down the global prevalence of diabetes.



What we need is a:



Clinically validated solution that provides point of care targeted health advice to diabetic patients when they need it the most



Integrated solution that works across both primary and secondary healthcare systems (GPs, specialists, allied health, community pharmacy etc)



An easily deployable solution that can be scaled quickly

Stats and references:

• Western Sydney Diabetes Year-in-Review 2020 — <https://www.westsydneysydneydiabetes.com.au/themes/default/basicmedia/content/files/WSD-Year-in-Review-2020.pdf>

• Living with Diabetes: Aboriginal and Torres Strait Islander People — <https://www.diabetesaustralia.com.au/living-with-diabetes/aboriginal-and-torres-strait-islanders/>

• Australia's First Dedicated Department of Diabetes — https://www.monash.edu/_data/assets/pdf_file/0908/113189/diabetes-launch-booklet.pdf

• Diabetes: The Silent Pandemic and its impact on Australia — <https://www.diabetesaustralia.com.au/wp-content/uploads/Diabetes-the-silent-pandemic-and-its-impact-on-Australia.pdf>

